

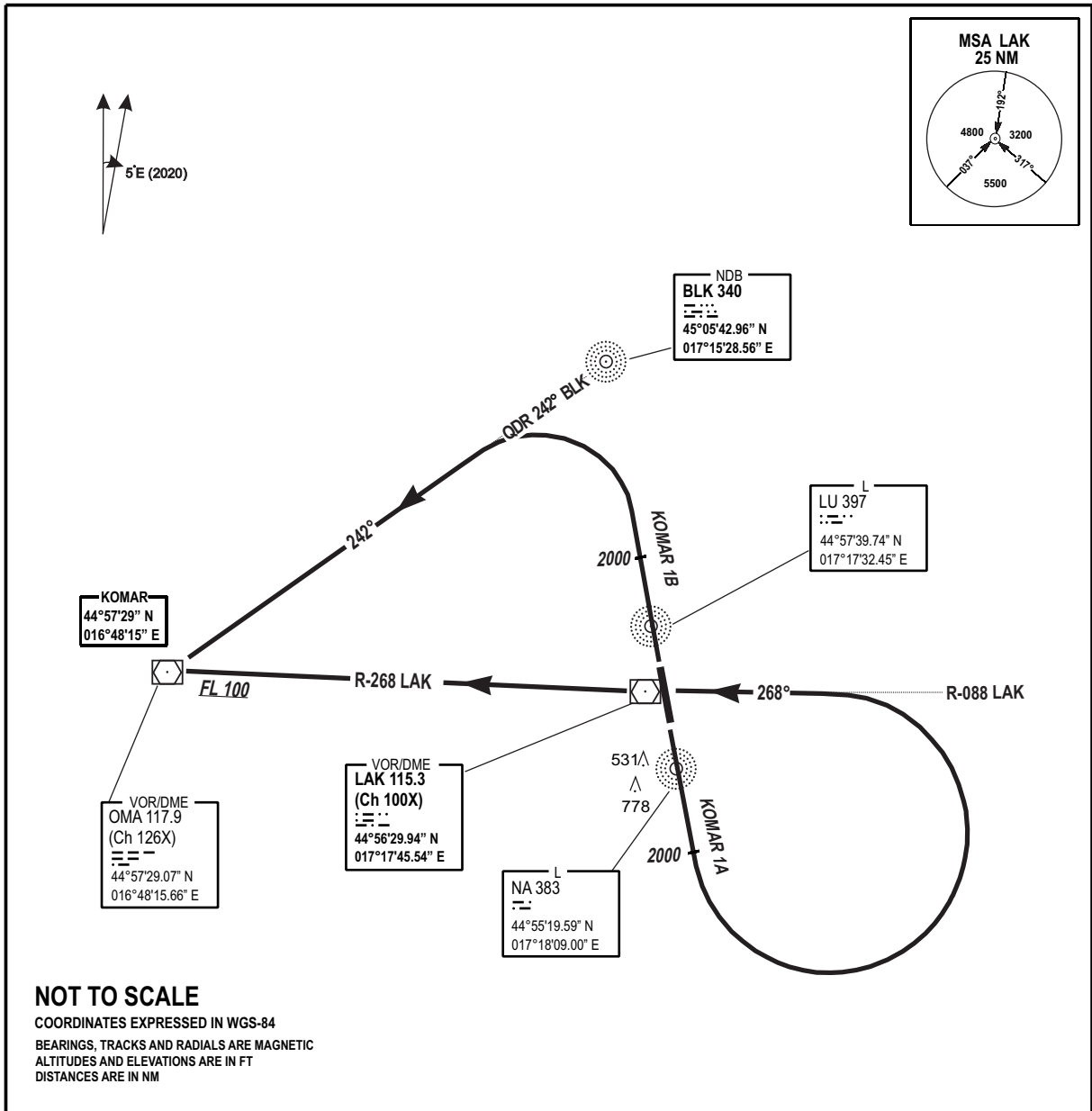
**STANDARD DEPARTURE
CHART INSTRUMENT
(SID) - ICAO**

AD ELEV
401 FT

TRANSITION
ALTITUDE
10 000 FT
VAR 5° E (2020)

TWR/APP 133.075
SPARE 124.175

**BANJA LUKA (LQBK)
KOMAR 1A / KOMAR 1B**



NOT TO SCALE
COORDINATES EXPRESSED IN WGS-84
BEARINGS, TRACKS AND RADIALS ARE MAGNETIC
ALTITUDES AND ELEVATIONS ARE IN FT
DISTANCES ARE IN NM

| MNM REQUIRED CLIMB RATE (FPM) | | | | | | | | | |
|-------------------------------|------|-----|------|------|------|------|------|------|--|
| RWY | % | 80 | 120 | 150 | 180 | 210 | 250 | To | |
| 16 | 8.5% | 690 | 1040 | 1300 | 1550 | 1810 | 2160 | 2500 | |
| 34 | 5.6% | 460 | 680 | 860 | 1030 | 1200 | 1420 | 2500 | |

| SID | ROUTEING (Including MNM Noise Routes) |
|----------------------------|---|
| KOMAR 1A (MAG BRG 165°) | Climb on RWY TR to 2000 FT, then turn left to TR 268° to intercept and follow R-088 to LAK. Follow R-268 LAK to cross KOMAR at or above FL 100. |
| KOMAR 1B (MAG BRG 345°) | Climb on RWY TR to 2000 FT. Then turn left to QDR 242° BLK to cross KOMAR at or above FL 100. |

CHG: EDITORIAL CHANGES:

THIS PAGE INTENTIONALLY LEFT BLANK